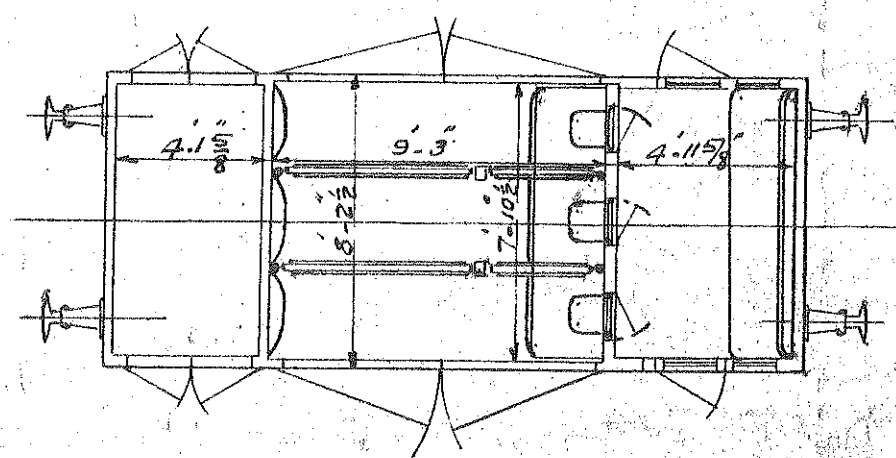


CARRIAGE NOS 559, 560, 561.



DRAWING NO 27864.E.

- DUAL BRAKE
- HAND LEVER BRAKE
- OIL LIGHTING
- TO CARRY 3 TONS

HORSE BOX C.L.C

WEIGHT 16-13-8.

STEAM HEATING COMPLETE

BUILT BY BIRMINGHAM RLY CARR. & WAG. CO 1928.

PRINT RECEIVED JUNE 1928.